

Laboratory automation made easy with the Z-Lab

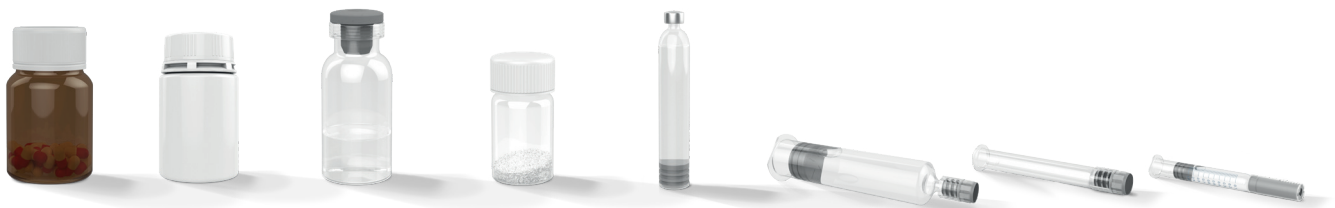
“Do not touch” is usually the rule in a controlled environment. With the Z-Lab, however, touching is actively encouraged. This semi-automatic machine deploys industrial technology to achieve maximum performance.

Z-LAB

- ✓ FDA- and GMP-compliant laboratory system
- ✓ Suitable for all container types
- ✓ Pump technology for a variety of fluids and viscosities
- ✓ Reliably reproducible quality
- ✓ Suitable for use in an isolator

As a semi-automatic platform solution, the Z-Lab is genuinely suitable for all tasks great and small: Primarily designed for laboratory tasks at pharmaceutical companies, the Z-Lab is also suitable for R&D or for when you receive orders for small or micro batches, whether you are a start-up keen to begin production for the first time or a contract manufacturer. The Z-Lab fills, closes, and crimps your primary packaging materials as effectively as fully automated production lines, except that it runs a little slower and involves some manual intervention. But it is precisely these characteristics that makes it the ideal technology for the lab and, above all, for use in an isolator.

Demonstrable and reproducible quality is provided by the synchronized axis guidance and therefore maximum reproducibility, along with the temperature-monitored electronics and the 9" touchscreen. Tool-free format switching from fill to crimp takes place quickly and intuitively – and the fact that the Z-Lab even has a sterile filter with differential pressure monitoring, reliably protecting the product and components from contamination, is another major plus point.



Details



Filling

Easy and precise filling of all types of stationary containers — even non-rigid containers such as syringes, cartridges and tubes.



Crimp Capping

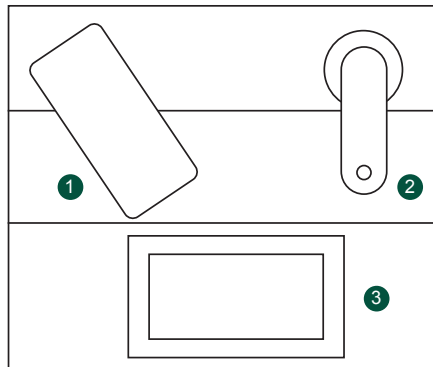
Automatic closing of vials and cartridges with crimp or flip-off caps — all while providing the flexibility of adjusting the crimping speed, central crimp pressure, and stroke of the crimping head.



Closing

Ability to close all types of stable containers, including non-rigid ones, along with providing individually adjustable tamping depth and indentation speed.

Process illustration



- ① Piston Pump
- ② Filling
- ③ Touch Panel

Technical data Z-LAB

The technical data might vary, depending on the container dimensions and shapes, the product to be filled, the machine configuration and material specifications.

Outer unit diameter	Unit height	Output/min	Output/h
up to 68 mm	up to 160 mm	8	500

Size (LxWxH)	Weight
0,48 x 0,46 x 0,9 m	74 kg