



# Z-LAB

- ✓ FDA- and GMP-compliant laboratory system
- ✓ Suitable for all container types
- ✓ Pump technology for a variety of fluids and viscosities
- ✓ Reliably reproducible quality
- ✓ Suitable for use in an isolator

The Z-lab is available in the three versions:

Z-Lab Fill – filling using rotary piston, peristaltic or viscotec pump technology

Z-Lab Close – vacuum stopper setting for syringes and cartridges

Z-Lab Crimp – crimping of vials

The units are available in versions designed to be integrated into a range of containment systems and include suitability for use with a VHP cycle. Batch report and audit trail are standard features, and the series is accompanied by a comprehensive set of (cGMP) documentation. Equipped with the same technology and components as the fully automatic Rychiger machines, repeatable and reliable process quality of the end product is guaranteed while scale up to larger production volumes is simple.



## Details



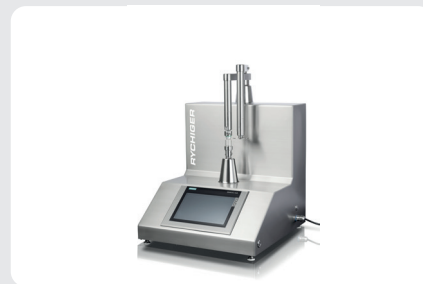
### Filling

Easy and precise filling of all types of stationary containers — even non-rigid containers such as syringes, cartridges and tubes.



### Crimp Capping

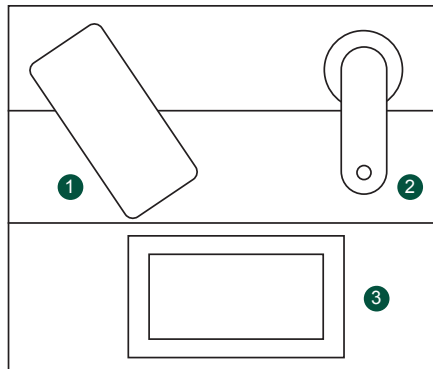
Automatic closing of vials and cartridges with crimp or flip-off caps — all while providing the flexibility of adjusting the crimping speed, central crimp pressure, and stroke of the crimping head.



### Closing

Ability to close all types of stable containers, including non-rigid ones, along with providing individually adjustable tamping depth and indentation speed.

# Process illustration



- ① Piston Pump
- ② Filling
- ③ Touch Panel

## Technical data Z-LAB

The technical data might vary, depending on the container dimensions and shapes, the product to be filled, the machine configuration and material specifications.

Outer unit diameter	Unit height	Output/min	Output/h
up to 68 mm	up to 160 mm	8	500

Size (LxWxH)	Weight
0,48 x 0,46 x 0,9 m	74 kg